

Sierra County

Historical Society

Member of California Conference of Historical Societies

Vol. XVII, No. 2

Fall 1989

A VISIT TO THE LOYALTON HISTORICAL PARK AND MUSEUM!

It is with great pleasure that the editorial staff of The Sierran takes our fine readers on a tour of the Loyalton Historical Park and Museum. The park area, the initial museum building and the recently completed Research Center were all developed or built with grants from the California Department of Parks and Recreation. The Dept. got the funds from the good people of California who passed the necessary bonds for historical preservation. Thank you, California voters! Your tax dollars are being put to good use. The entire complex is part of the "museum chain" envisioned by the Sierra County Historical Society--an eventual chain of four museums which will stretch from Sierra Valley to the western end of Sierra Co.

The museum displays are housed in two buildings, one of which is the oldest building in Loyalton and which was built as the first school house in Loyalton. It was later used as the first Catholic Church in Loyalton and was donated to the museum by the Catholic community. It was moved to its present site with the generous aid of Sierra Pacific Industries and Rob McAdams, the expert driver of massive logging equipment.

All exhibits in both museum buildings pertain to the history of



(Golden West Hotel-taken in 1946)

Sierra Valley and nearby areas, with an emphasis on the history of logging and agriculture.

Among the many interesting displays in the first building of the museum are the following:

The Old Golden West Hotel

This display has attempted to recreate a room in the hotel in 1921. All the items in the room are from the hotel and include desks, a dresser, a bed, a lamp, and other items of this era.

The History of the Washoe Indians:

The beginning of this display was created by three Loyalton High School students as an entry to



(Washoe Indian Family, circa 1915, courtesy of Eslie Cann, Nevada Historical Society)

National History Day. The students, Tim Rupp, Dave Clark and Shantel Scatenajwon and were able to enter their display in Washington D.C. Art work and Indian baskets were donated by Dr. John R. Gottardi. An excellent display of artifacts which traces over eight hundred years of Indian history in the Sierra Valley area was created by Lisa Perry (nee Holstrom). We hope to make this display the outstanding display of the Washoes in all California. Baby carriers were donated by Rose Over and Jim and Jack Perkins. All of these were made by local Indian women (mahales).

The History of the I.O.O.F. Lodges in Sierra Valley (Sierraville and Loyalton):

Besides the many interesting artifacts in this display, there are over one hundred years of written records of the Sierraville and Loyalton lodges. These records have already been used by several people doing historical research of their families.

GROWING UP IN SIERRA VALLEY:

This display contains toys, books, buggies, beds, sleds and cradles used by children in the Sierra Valley region from the 1880's through the 1950's. While many people made contributions, special thanks goes to the Church family for its many artifacts.

Styles and Stores in Sierra Valley:

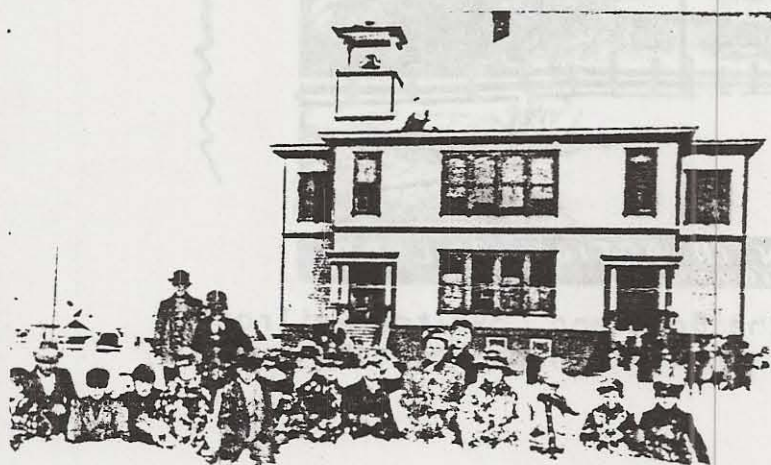
This display will be of particular interest to the ladies of the Historical Society for it contains dresses worn in the Valley from 1859 through the 1930's. Display cases for this collection were made by Bill Harnack and his shop classes at L.H.S. Elegant wedding dresses of the 1800's, daring Flapper outfits of the 1920's and scandalous underwear of the 1930's are all part of this display. A special thanks goes to Jeff Kintop for obtaining several manikins for our display.

Other displays in this building include "Sin in Sierra Valley", a history of Loyalton in old photographs, music of the swinging 40's, popular postcards from the turn of the century, a history of the Loyalton Baptist Church, a collection of Depression Glass, obviously from the 1930's, and old records from stores, lodges and the tax collector.

The second building of the museum (which is the old church/school building) also houses many interesting displays. Upon entering the building one sees the hearse used in Loyalton at the turn of the century. The hearse, restored to mint condition, was a gift of the California Park Service, through the great help of Don Murphy. Other displays include the following:

Schools in Sierra Valley:

This display is always a favorite of Class Renunions because it contains pictures of Loyalton students from 1907 and features the graduating classes from 1912 through 1989.



(The second school built in Loyalton- This photo taken in 1907 by Thompson shortly after the school was completed. Courtesy of Bud Cooper)

Keeping House in Sierra Valley:

This display contains the many and varied impliments used by the ladies of Sierra Valley over the past one hundred and thirty years. From the 1880's are irons and butter churns, from the early 1900's are new kinds of irons and kitchen ware and from the 1920's are an ice box and working phonograph (gifts of Marcel Bony). One can see why a "...woman's work was never done." Some of our members might want to try some of the old recipes on display.



Agriculture and the Dairy Industry of Sierra Valley:

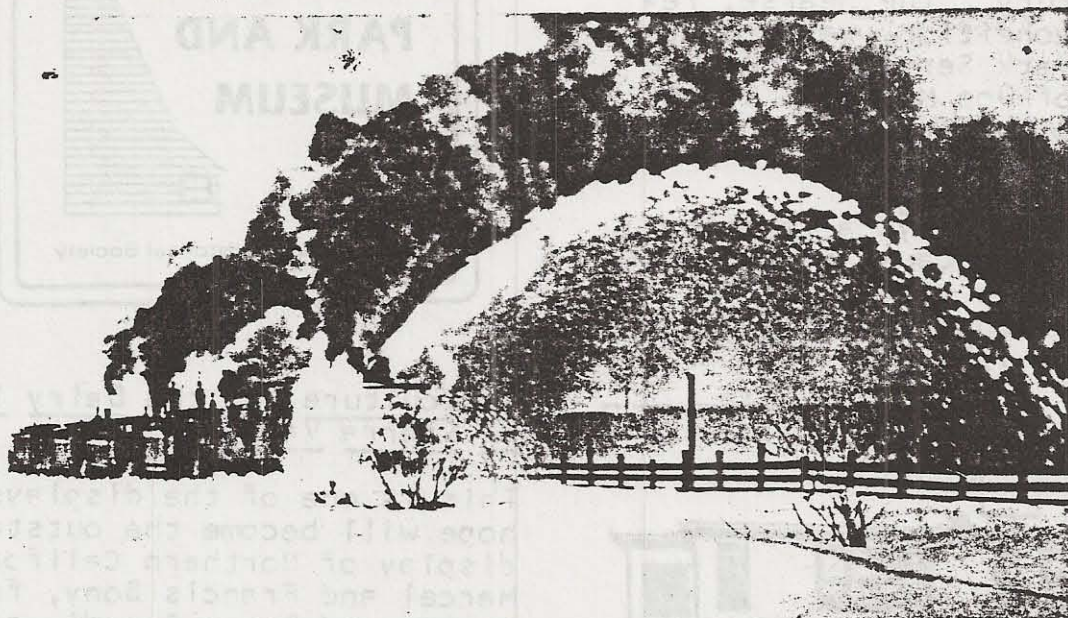
This is one of the displays we hope will become the outstanding display of Northern California. Marcel and Francis Bony, followed by Leo and Betty Grandi, gave us a great beginning to the display. Others have followed, including Adela Lombardi with a unique 1907 feed mixer, Dario D'Andrea with dairy machinery and Jack and Jim Perkins with cider presses.

Catholic Church Artifacts from the period (1907 to 1960's) when the museum was used as a church:

This display includes the original baptismal font, a crucifix used in the first Catholic Church built in Sierra Valley in the area near Beckworth, and a station of the cross given to the Loyalton church from the Truckee church. The outstanding part of the display includes several robes worn by the priests for the Mass. These are hand stitched on elaborate brocades and are displayed in beautiful cases constructed by Bill Harnack.

Pictorial History of Railroads in the Sierra Valley Area:

This display includes pictures of the Boca and Loyalton Railroad and the several logging railroads which operated in the Sierra Valley region from the 1880's through the 1960's.



**No. 1) ROTARY SNOW PLOW IN ACTION B.&L. R.R.
COPYRIGHT 1911 BY P.J. THOMPSON**

(A post card showing snow removal on the Boca and Loyalton Railroad in 1911. This postcard was made by the Loyalton photographer, Thompson.)

History of Logging in the Sierra Valley Area:

This display includes logging equipment and photographs from the many mills that operated in Sierra Valley and Loyalton and surrounding areas over the past 150 years. Of special interest are several photos taken by Thompson in 1908 of the Lewis and Reece mills. These are on loan from Ms. Florence Black. If any of our readers have any old pictures of the logging industry or anything of historical interest we would welcome putting them with our display. We will copy the picture and return the original to the owner. A negative would be placed in our research center for future research.

✓✓✓IMPORTANT NOTICE-PLEASE READ!

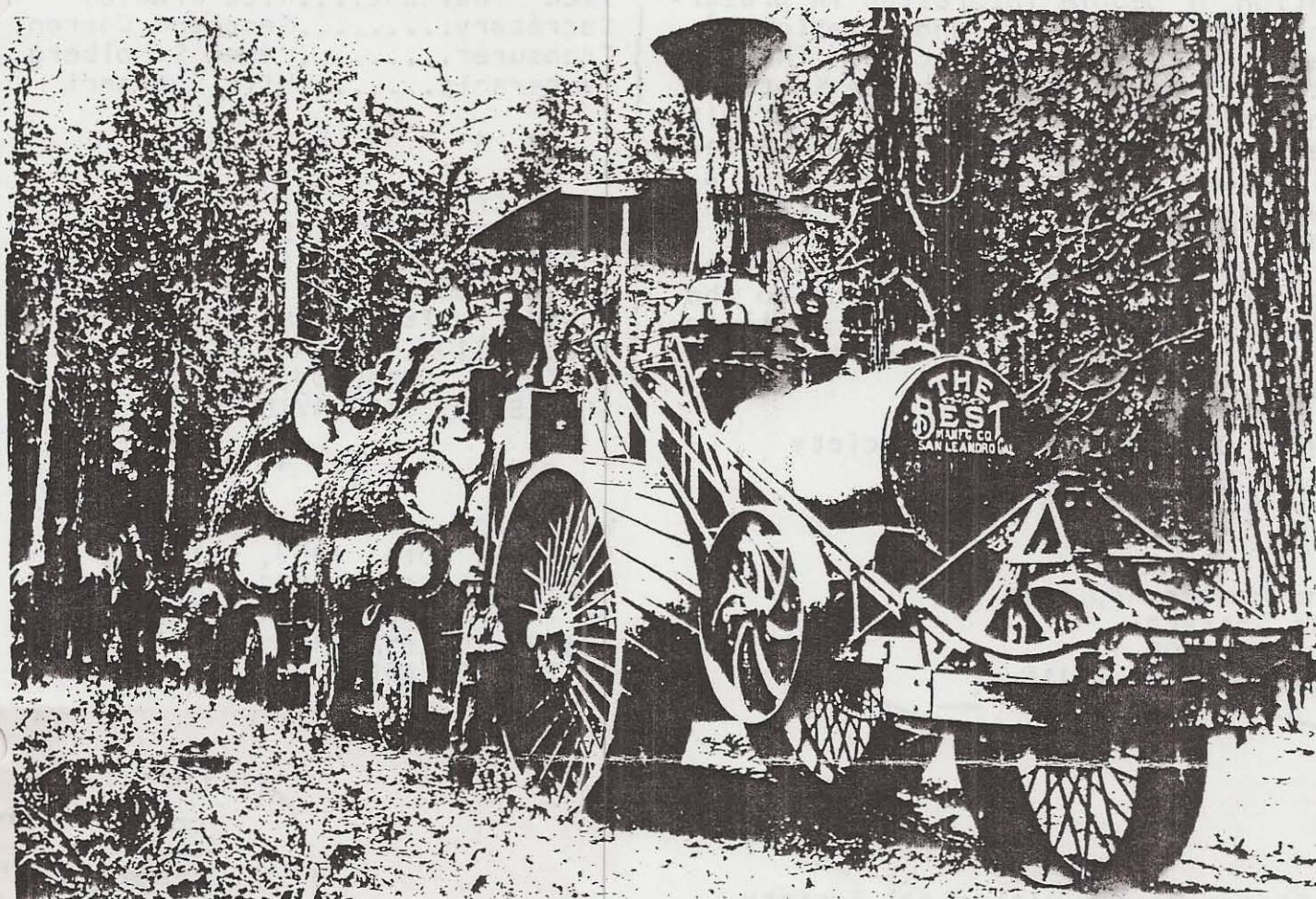
SIERRA COUNTY HISTORICAL SOCIETY FALL MEETING!!

- ✓WHERE? LOYALTON SOCIAL HALL
- ✓WHEN? SUNDAY, OCTOBER 8, 1989
- ✓WHAT? Potluck luncheon at 12:30p.m.

Meeting to follow!

Important meeting to review

1. finances-
2. plans for 1989 and 1990
3. application for grants-
4. membership news-
5. Historical Society Projects

OUTSIDE DISPLAYS IN THE HISTORICAL PARK AREA:

Logging Steamengine, sometimes called a "Donkey", which has recently returned to Loyalton and is in the Historical Park. Photo from files of Historical Society.

The outside displays in the Historical Park section are divided into two areas; one dealing with the history of agriculture in Sierra Valley and the other dealing with the history of logging in the Sierra Valley area. The California Dept. of Parks in July gave to the Historical Park the Steam Engine pictured above, and three logging wagons. At the same time the Truckee Chamber of Commerce donated a set of "Big Wheels" originally used in the Lewis Mill area in the 1870's.

An outstanding display in the Historical Park is a restored Hay Press. This is dedicated to the

memory of George Woodward, George Penman and Robert Penman, pioneers who used the press in the Mohawk Valley area. It stands in our park because of the hard work of Mr. Aubrey Penman and Bill Harnack.

Agriculture displays include a set of sleds used to carry hay to livestock during the winter on the Mac and May Dory Ranch, a sleigh used in the Sierraville area and donated by Marcel Bony and several pieces of antique farm machinery donated by Mrs. Elia Miles. This part of the park is presently being landscaped for the 1990 season.

HISTORICAL SOCIETY

The Historical Society is an organization of people interested in preserving and promoting an appreciation of Sierra County's rich history. The Society operates a museum at the Kentucky Mine in Sierra City, is affiliated with the Loyalton Historical Park and Museum, holds quarterly meetings, publishes a newsletter and conducts historical research. Members are sent notices of society activities, receive newsletters and are admitted free of charge to the Kentucky Mine Museum and Stamp Mill tour and to the Loyalton Historical Park and Museum.

Sierra County Historical Society
P.O. Box 260
Sierra City CA 96125
(916) 862-1310

Send membership dues to
Milt Gottardi
P.O. Box 305
Loyalton, CA 96118

Sierra County Historical Society
P.O. Box 260
Sierra City, CA 96125

OFFICERS

President.....Lincoln Madsen
Vice President....Rita Bradley
Secretary.....Georgene Copren
Treasurer.....Maren Scholberg
Membership.....Milt Gottardi

* * * * *

THE HISTORICAL SOCIETY NEEDS INTERESTED VOLUNTEERS TO COORDINATE OUR BULLETIN. THIS INVOLVES RESEARCH, COLLECTING AND FILING HISTORICAL MATERIAL AND EDITING FOR PUBLICATION. PLEASE CONTACT MILT GOTTARDI, LOYALTON, CA or MARN SCHOLBERG, SIERRAVILLE, CA.

* * * * *

WATCH FOR OUR NEXT BULLETIN DUE DECEMBER 10th, 1989. IT WILL FEATURE SOCIETY NEWS, THE HISTORY OF THE WASHOE INDIAN TRIBE IN SIERRA VALLEY, AND NEWS UPDATE ON THE RESEARCH CENTER!

Sierra County Historical Society

RECEIVED OCT 12 1989