

# The Sierran

— A Publication of the Sierra County Historical Society —

## History of the Schools of Sierra Valley

*We are continuing our reprinting of some of the articles that were included in the schools publication that the SCHS compiled in 2004. If you are interested in purchasing the book please contact Dianne Bruns at the Kentucky Mine Museum at 530-832-1310.*

### Long Point School

By Maren Scholberg

**F**arriss and Smith, in their book History of Plumas, Lassen & Sierra Counties, state that in 1881 there were 13 children in the school at Long Point and the value of the school property was \$250.00. There was both an Antelope School and a Long Point School because the same source lists Antelope School with 28 pupils.

In later years the Long Point School and Antelope School names became interchangeable. Alvin Lombardi attended first grade in Long Point School in the old Antelope School building and attended there until 1927.



In 1909, a new Long Point School District was formed and a small new school building as erected near the Charles Jones ranch on Highway 49. The schoolhouse stood where the Eamon Muldowneys house now stands. Eamon and Betty Muldowney have found a number of homemade marbles around the yard left from those school days. Som seemed to be made of clay; others were made of dough and baked and were called "dough boys".

The school was closed from 1919-1921 because the attendance fell below the minimum required. When it opened in 1921, Irene Loque, from near Oroville, was the new teacher. One of her pupils was Dario D'Andrea, now of Loyaltan, who attended first grade. At that time, his family lived on the Charles Jones ranch so school was very near. Bob Pasquetti also attended this school and finished 8th grade here.



Irene Logue Torri, teacher at Long Point School and Island School.

History of the Schools of Sierra Valley - (Cont. on Page 3) —

— THE SIERRA COUNTY HISTORICAL SOCIETY —



The Sierra County Historical Society is an organization of people interested in preserving and promoting an appreciation of Sierra County's rich history. The Society operates a museum at the Kentucky Mine in Sierra City, holds an annual meeting, publishes a newsletter and conducts historical research. Members are sent notices of Society activities, receive THE SIERRAN, and are admitted free-of-charge to the museum and stamp mill tour. If you would like to become involved in these activities or would just like to give your support, please join us!

## Officers and Executive Board of The Sierra County Historical Society

Mary Nourse, President	James Connolly, Director
Ernie Teague, Vice President	Suzi Schoensee, Director
Bill Copren, Treasurer	Joe Madigan, Director
Don Yegge, Membership	Judy Lawrence, Director
Susan Hopkins, Director	Mark Lombardi, Alternate Director
Judy Lawrence, Virginia Lutes, Co-Editors of The Sierran	Cindy Ellsmore, Webmaster
	Chris Stockdale, Music at the Mine

Dianne Bruns,  
Museum Curator

If you have any suggestions or comments, feel free to contact any board member or email at [info@sierracountyhistory.org](mailto:info@sierracountyhistory.org)

## Become a Member!

Membership in the Sierra County Historical Society is open to any interested person, business or organization. Members need not be residents of Sierra County. Dues are due and payable each January for the calendar year.

Membership categories are as follows:

INDIVIDUAL .....	\$20.00
FAMILY & INSTITUTION.....	\$25.00
BUSINESS & SUPPORTING.....	\$35.00
SUSTAINING.....	\$50.00
LIFE (per person/couple) .....	\$300.00

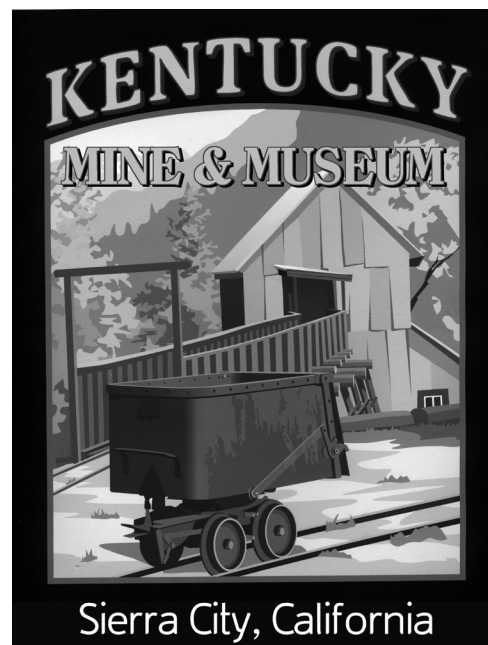
In addition, Museum Renovation Project donations are gratefully accepted.

Please send dues and donations to:  
S.C.H.S.

c/o Don Yegge, Membership Chair  
PO Box 336, Loyalton, CA 96118

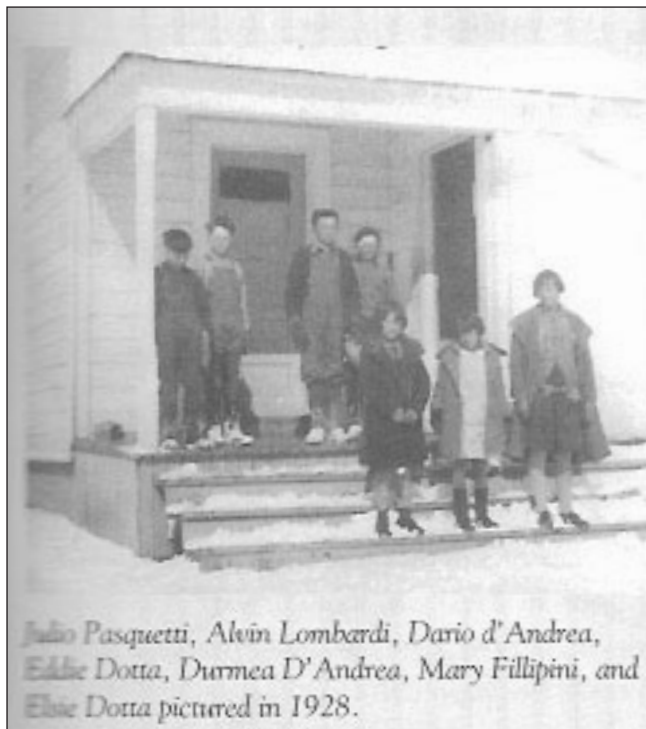
## Call for Volunteers at the Kentucky Mine and Museum

As we prepare for another busy season at the Kentucky Mine and Museum, we invite anyone interested in California Gold Rush history to join our wonderful group of volunteers! Whether you would enjoy leading mine tours, creating museum displays, working in the bookshop, accessioning artifacts, or assisting our curator in a variety of other duties; we would appreciate your help. If you are interested in becoming a part of our museum family, please call curator Dianne Bruns at 530-862-1310, or stop by the museum during business hours: Wednesday-Friday, 10:00 AM to 4:00 PM. A summer day at the Kentucky Mine is a great way to enjoy our beautiful area and to share its unique history with visitors.



### History of the Schools of Sierra Valley - (Cont. from Page 1) —

Because of the change in school population the schoolhouse was moved in 1927 to the south side of Highway 49 near the junction to the Filippini Ranch. This was across the road from where the old Antelope School stood. It was at this time that Alvine Lombardi started going to this school.



The school closed from 1931-1937 because of the lack of school children in the area. In those days the school building as moved to where ever the school population required one. So using rollers and a tractor, the schoolhouse was moved to the present Don Vanetti ranch on Highway 49. The school opened for the last time in 1937 with Mrs. Irene Torri as teacher. Irene Loque had married a local rancher, Pasquale Torri, and had become a permanent resident of Sierra Valley.

The Long Point School building was moved four times. It is now on Elia Miles Ranch and is owned by Pamela Metcalf.


Mrs. Gertrude Guess became the teacher in 1938. Her two daughters, Joyce and Phyllis, were in her classroom. Mrs. Guess changed her name to Gertrude Snyder in 1941 when she married Rev. George Snyder, pastor of the Loyalton Baptist Church. (Her daughters married and changed their names to Joyce Hofer and Phyllis Cross, both now living in Loyalton.) Gertrude Snyder continued teaching until the school was permanently closed in 1946. James Pasquetti, of Loyalton, attended Long Point School from 1939 to 1946, the year it closed. Mrs. (Guess) Snyder was his teacher for those seven years. After that, students were bused into Loyalton. Mrs. Snyder then began teaching in Loyalton Elementary School.

STANDING OF		
<i>Alvin J. Lombardi</i>		
FOR		
Diploma of Graduation		
FROM		
<i>Long Point</i> SCHOOL DISTRICT		
SIERRA COUNTY, CALIFORNIA		
Dewaleville, Calif. <i>June 17, 1937</i>		
	SCORE	STANDARD
Spelling, .....	<i>93</i>	100
Grammar, .....	<i>84</i>	100
Arithmetic, .....	<i>76</i>	100
Geography, .....	<i>43 1/2</i>	50
Mental Arithmetic, .....		25
Psychology, .....	<i>42 1/2</i>	50
History, .....	<i>42 1/2</i>	50
Constitution, .....	<i>39</i>	25 50
Civics, .....	<i>21 1/2</i>	25
Literature, .....		50
Composition, .....	<i>45 1/2</i>	50
Penmanship, .....		25
Neatness, .....		25
Reading, .....	<i>46 1/2</i>	50
Total, .....	<i>86 1/2</i>	555 825
Necessary for Diploma, 75 per cent.		
<i>Belle Alexander</i>		
Secretary of the Board of Education of Sierra County, California.		



### History of the Schools of Sierra Valley - (Cont. from Page 3) —

**D**ario D'Andrea graduated from Long Point School in 1930. Mrs. Ruth Cartmell, a Loyaltan resident for many years, was his teacher. Alvin Lombardi kept his 8th grade Diploma of Graduation from Long Point School in 1931. It was signed by Belle Alexander, the County Superintendent of Schools.

  
 Alvin Lombardi kept his 8th  
 grade Diploma of Graduation  
 from Long Point School in  
 1931. It was signed by Belle  
 Alexander, the County  
 Superintendent of Schools.

In 1946 the building was moved into the west end of Loyaltan near Cemetery Lane where the Veterans of Foreign Wars used it for a number of years. In 1981, the building was purchased by Pamela Metcalf, a Loyaltan teacher, and moved next to her home on the Elia Miles ranch where it is used as an extension of Pamela's house.

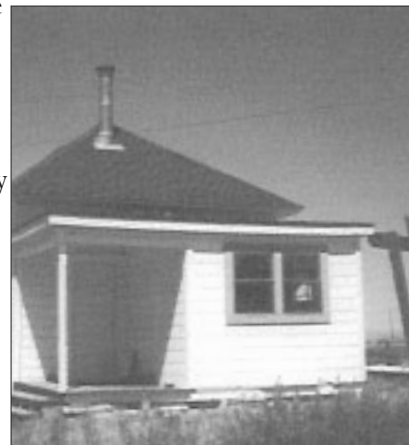
This is Mr. Sinnott's list of teachers for the Long Point School:

Mrs. Charles A. Copren - 1909-1910  
 Mrs. F. Fuller - 1910-1911  
 Julia M. Cord - 1910-1911  
 Mrs. Stella Stinehoff - 1911-1912  
 Mabel Pierpont - 1911-1912  
 Wilodyne Dickinson - 1912-1913  
 Mrs. Alice Turner - 1912-1913  
 John Berger - 1913-1914  
 Mrs. M. Willson - 1913-1915  
 A.S. Hamlin - 1913-14  
 Annie Applegate - 1914-15  
 Hazell Findell - 1915-16  
 Lurliea Relph - 1916-17  
 Mrs. Alice Ashbrook - 1917-1919  
 Irene Loque - 1921-1923  
 Miss Josephine Tomola - 1923-1924  
 Mrs. Clara M. Taylor - 1924-1926  
 Mrs. Ruth Cartmell - 1926-1927  
 Mrs. Helen W. Turner - 1927-1928  
 Mrs. Ruth Cartmell - 1929-1930

Mrs. Estelle Newton - 1930-1931  
 Mrs. Irene Torri - 1937-1938  
 Mrs. Gertrude Guess - 1938-1941  
 Gertrude Guess Snyder - 1941-1946

Over the years some of the children that attended Long Point School were Ernest and Violet Nelson; Louis, Lilley Elsie and Edward Dotta; Mary and George Filippini; Dario, Durmea and Seerena D'Andrea; Kenneth Torri; Rose, Virginia and Don Vanetti; Mary

Lou Carano; Bob, Julio, Don and James Pasquetti; and Alvin Lombardi. Some of the Richard Mooney children attended for a short period before the school was discontinued. Joyce and Phyllis Guess were students when their mother taught there.



*Josephine Tomola, teacher at Long Point School.*

### Sources

History of Early Schools of Sierra County - Vol. XII,  
 No. 1. The Sierran  
 History of Plumas, Lassen & Sierra Counties 1882 -  
 Farris and Smith  
 Sierra Valley Jewel of the Sierras by James J. Sinnott  
 Interview with Adella Lombardi in 2003 and 2004  
 Interview with Dario D'Andrea in 2003 and 2004

## AFTER A LONG, HARD WINTER...

*We're Ready For a Summer of Music, Fun, Learning and Greeting Neighbors and Friends at the Kentucky Mine and Museum!*

### Opening Day Celebration Held May 27th!

It was an entire day of activities including food, music, mine tours and more!

**OPENING DAY 2017 CELEBRATION!**

**KENTUCKY MINE**

**SAT. MAY 27TH, 12-4PM**

*To Sierra County & Beyond: Come One and All to Opening Day Celebration 2017 at the Kentucky Mine Park and Museum in Sierra City, California!*

**FREE:**

- \*Docent Led Tours of the Mine @1pm, 2pm, & 3pm
- \*Glitter Tattoos for the Kids
- \*Ice Cream Sundae Bar
- \*Magic Show in the Amphitheater @1:30
- \*Concert in the Amphitheater Featuring Local Musicians, "The String Alongs" @2:30pm

ENJOY AFFORDABLE GRILLED BURGERS AND HOT DOGS, OR BRING YOUR OWN PICNIC AND REFRESHMENTS!

Fun & Amazing Magic Shows  
**Magic by Bill**  
"Incredibly Entertaining"

**Kentucky Mine Amphitheater**  
Music at the Mine

Questions/Information call Chris @530.862.1076

## Music at the Mine Concerts!

*Check out the line up of incredible musical groups performing throughout this summer at the Kentucky Mine Amphitheater!*



## Music at the Mine

**Sat. May 27, Opening Day/ Community BBQ & Free Concert - 12:00 PM - 4:00 PM**

Local Musicians/Entertainers/Vendors/Activities for Children

**Sun. June 25, Molly's Revenge 3:00 PM - \$18/\$21**

Traditional Celtic Music of Ireland & Scotland

**Sat. July 8th, Mumbo Gumbo 7:30 PM - \$22/\$25**

Soul Rock / R&B / Zydeco

**Sat. July 29th, Achilles Wheel 7:30 PM - \$18/\$21**

Americana, Roots Rock n Roll

**Sat. August 19th, Whiskey Pass 7:30 PM - \$16/\$19**

Hi-Octane Country / Classic and Originals

**Sun. Sept. 3rd, One Eyed Reilly w/ Dust in My Coffee 2:00 PM - \$16/\$19**

Celtic Folk Rock / Cowboy Music



**Purchase Tickets Online at [sierracountyhistory.org](http://sierracountyhistory.org)**  
For retail ticket locations, questions or concerns contact

Chris at (530) 862-1076

or go to our Facebook page "Music at the Mine"

*Pre-concert BBQ dinners served by the "Red Moose Cafe" (\$16) will be offered at the Saturday night concerts beginning at 6:00 PM*

*As Always, you are welcome to bring your own food and refreshments to the concerts.*



## Gold Miner's Daughter

*"A Memoir of Boom, Bust and Bliss in the High Sierra"*  
is the story of Mabel W. Thomas who arrived in Sierra City in 1885.

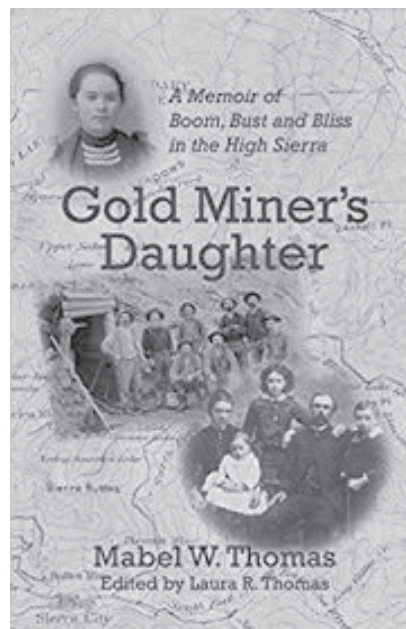
The daughter of a miner who relocated to California when the copper and tin mines of Cornwall declined, Mabel spent her childhood living in a cabin at the Sierra Buttes Mine. The story chronicles seven-year-old Mabel's stagecoach journey "above" from Grass Valley with her mother and little brother. They joined her father who took the family on a walking tour while they lingered in town awaiting the delivery of their furniture by freight wagon. This narrated tour is a priceless snapshot of Sierra City in its heyday, and it provides context for the rest of the book which chronicles domestic life in the northern mines set against the backdrop of local happenings and significant world events.

The memoir is edited and introduced by Mabel's great-niece Laura Thomas, a former editor and writer at the San Francisco Chronicle. It is available through many online book retailers including Amazon and Barnes & Noble. It will also be for sale this summer at the Kentucky Mine Museum bookstore.

SIERRA COUNTY HISTORICAL SOCIETY  
Invites You to Attend A  
**BOOK RECEPTION**  
Celebrating the Publication of  
**A MEMOIR OF LIFE IN THE NORTHERN MINES**

Saturday, June 24  
4:00 PM  
HOLLY HOUSE  
119 Main Street  
Sierra City

Meet Laura Thomas, editor and great-niece of the author Mabel Thomas. Mabel arrived in Sierra City by stagecoach in 1885 at the age of seven and lived with her family in a cabin at the Sierra Buttes Mine. Laura will read excerpts of this enchanting memoir that is packed with historic details and captivating photographs.



Prior to the reception, a walking tour of Sierra City will be led by local historian and photographer Dee Wallace. Meet at the Masonic Hall, Butte and Hwy. 49 at 2:30. The reception and tour are free-of-charge and open-to-the-public. Donations to SCHS are always appreciated.

# The Sierran

Sierra County Historical Society  
P.O. Box 260  
Sierra City, California 96125

ADDRESS CORRECTION REQUESTED

## **“Cultural History of Sierra County” Course Offered at San Francisco State Sierra Field School**

**I**f you are reading the Sierran newsletter you will probably be interested in a course being offered this summer at the San Francisco State Sierra Field School campus located near Sierra City on Highway 49.

The course will utilize short lectures and field trips as we explore the human history of Sierra County. We will view Washoe petroglyphs, visit gold mines, follow the B&L railroad bed, compare past and present agricultural and logging practices, and learn numerous anecdotes and folk tales of this intriguing part of the Sierra Nevada.

The class, led by Sierra County historian William Copren, will be held from August 6 – 11. For more information about the class and to enroll, visit [www.sfsu.edu/-sierra/](http://www.sfsu.edu/-sierra/).

